



DISCOVER THE COMPLETE POLY MAX® RANGE

Bonding, fixing & sealing at the highest level



GET TO KNOW OUR POLY MAX® RANGE

Years ago, Griffon developed Poly Max®, based on SMP-Polymer technology, for bonding, fixing and sealing. Thanks to continuous innovations such as the further development of all varieties into quick Express formulas, Poly Max® continues to perform at the highest level. All Express varieties feature an extremely fast strength build up and attain full final strength after only 4 hours. As a result, connections can be subjected to loads much quicker so that you, as a professional, need not waste valuable time waiting. For bonding, fixing and sealing at the highest level, you can trust Poly Max®: High Tack for high initial bond strength and Fix & Seal for high elasticity.



POLY MAX® HIGH TACK EXPRESS

Solvent-free assembly adhesive based on SMP-Polymer with **very high initial bond strength** and **very fast strength gain**. Excellent for heavy materials and vertical applications.



POLY MAX® FIX & SEAL EXPRESS

Solvent-free assembly adhesive and sealant based on SMP-Polymer with **very high elasticity** and **very fast strength gain**. Ideal for fixing and sealing at the same time.

POLY MAX® IS GUARANTEED:

Solvent-free

Permanently elastic

Very good filling capacity

Non-shrinking; 100% adhesive

No soiling of joint edges

Weather resistant

Paintable

Suitable for slightly damp surfaces

Resistant to temperatures between
-40°C and +100°C



EXTENSIVELY TESTED AND CERTIFIED

The quality of Griffon Poly Max® has been extensively and independently tested and proven on the basis of various (European) standards:



EMICODE: classification system (GEV) from emission-properties for the use of construction products in interior spaces. It ensures that they satisfy the strict emission limits. Poly Max® High Tack Express and Fix & Seal Express satisfy the EC-1 Plus (Very low emission Plus) classification.



ISEGA: quality mark which confirms safe use of a product in environments where food products are prepared and processed. Poly Max® Fix & Seal Express White has tested positively for this property. *Isega certificate No. 51088U19.*



TÜV Rheinland: quality mark for which various properties are tested such as shear strength (beech wood on beech wood, beech wood on steel, beech wood on plastic), final strength, elasticity and tensile strength. Poly Max® High Tack Express and Fix & Seal Express have tested positively for these properties. *TÜV Rheinland certificate No. 000043168*



TÜV SÜD: quality mark for screwless fastening of metal stud interior walls. In accordance with work instruction number MUC-KSP-A 1044. As the first assembly adhesive on the European market, Poly Max® High Tack Express has obtained this approval. *TÜV SÜD certificate No. 20 01 90 317 001.*



KOMO: quality mark which ensures that a product complies to the quality requirements of the Netherlands Buildings Decree. Among other aspects, this means that the products are tested for properties such as final strength, initial bonding, bonding under tension, elasticity, filling capacity and moisture resistance. Poly Max® High Tack Express has tested positively for BRL 3107 (Construction adhesives). *KOMO certificate 'Construction adhesive' No. 32992.*



ATG: technical approval for which various properties are tested such as shear strength, bonding to various materials, elasticity and filling capacity. Poly Max® High Tack Express has tested positively for these properties. *ATG certificate 'Construction adhesive' No. 2870 (High Tack Express).*





POLY MAX[®] HIGH TACK EXPRESS

This universal, solvent-free SMP-Polymer based assembly adhesive has very high initial bond strength and very fast strength gain; its final strength is attained after only 4 hours! Poly Max[®] High Tack Express is especially suitable for heavy materials and vertical applications. Ideal for bonding and fixing ceiling elements, roof fascias, panelling and insulation material. Shoring or clamping is usually not necessary. This assembly adhesive can be used for practically all materials and surfaces, both indoors and outdoors and is also temperature, UV, water and weather resistant.

BONDING AND FIXING

WITH VERY HIGH INITIAL BOND STRENGTH

Available in white
and black

Suitable for wood,
(natural) stone, (cellular)
concrete, metal, hard foam
and various plastics*

Very high initial bond strength
& extremely fast strength gain

Ideal for heavy materials,
vertical applications, and
overhead applications

Special V-nozzle opening
for optimal distribution of
the adhesive



Express:
final bond strength
after 4 hours

For indoor and
outdoor use

Both the white
and black variant
can be handled after
approx. 30 minutes



For technical specifications, see the back of this folder.

* Not suitable for PE, PP, PTFE, pure plaster and bitumen.

** For an explanation of certifications and standards, see the 'Extensively tested and certified' pages at the front of this folder.

Griffon. The choice of the pro.



POLY MAX® HIGH TACK EXPRESS XXL SAUSAGE PACK

MAXIMUM PERFORMANCE

Especially for the professional who carries our bonding and fixing jobs regularly, Poly Max® High Tack Express - the fast assembly adhesive with very high initial bond strength - is also available in a 600 ml / 900 g sausage pack. This is more than twice as much as a standard cartridge. It enables even the biggest bonding job to be completed in a short period of time. A pack for maximum performance in terms of convenience, quality and waste reduction.



MAXIMUM WASTE REDUCTION

94% less waste volume compared
to cartridges

54% less waste weight
compared to cartridges

MAXIMUM CONVENIENCE

2.1 x as much volume as a
cartridge, so replace half as often

Sausage pack is quick and
easy to replace

Very easy to squeeze
out adhesive

IDEAL FOR LARGE SURFACES SUCH AS:

Wall covering panels

Ceiling elements

Facade panels

Plasterboards

Sheet and insulation material

Window sills



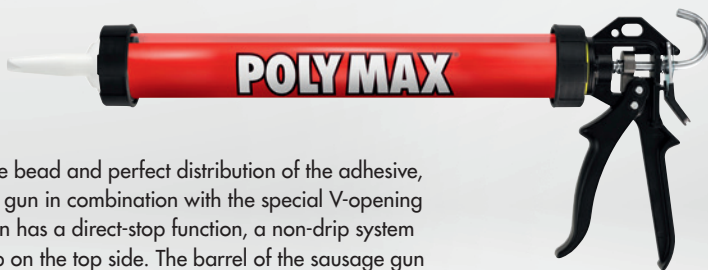
**1 SAUSAGE =
2½ CARTRIDGE**

Sausage = 600 ml/900 g

Cartridge = 285 ml/435 g

V-NOZZLE & SAUSAGE GUN

For the optimal adhesive bead and perfect distribution of the adhesive, use the special sausage gun in combination with the special V-opening nozzle. The sausage gun has a direct-stop function, a non-drip system and a handy vision strip on the top side. The barrel of the sausage gun can be rotated 360°.



For technical specifications, see the back of this folder.



POLY MAX[®] FIX & SEAL EXPRESS

Poly Max[®] Fix & Seal Express is ideal for fixing, sealing or a combination of both. It can be used for fixing window sills, panelling and insulating materials and for sealing seams and joints around window frames, roof facias and skylights. Poly Max[®] Fix & Seal Express is a SMP-Polymer based assembly adhesive and sealant that is characterised by very high elasticity and very fast strength gain. Final strength is attained after only 4 hours. Suitable for practically all materials and surfaces, both indoors and outdoors and is also temperature, UV, water and weather resistant.

BONDING, FIXING AND SEALING

WITH VERY HIGH ELASTICITY



Express:
final bond strength
after 4 hours

Available in white,
crystal clear, grey and black

For indoor and
outdoor use

Suitable for wood,
(natural) stone,
(cellular) concrete,
metal, hard foam
and various plastics*

Very high elasticity &
very fast strength gain

The white, grey and
black variant can be
handled after approx.
30 minutes and the
crystal clear variant
can be handled after
approx. 2 hours

Ideal for fixing in combination
with sealing



For technical specifications, see the back of this folder.

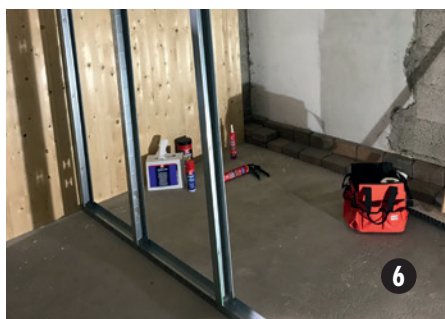
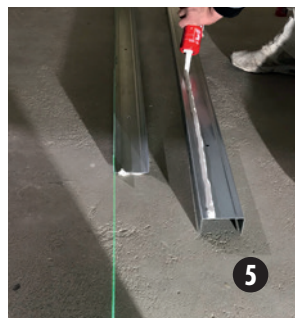
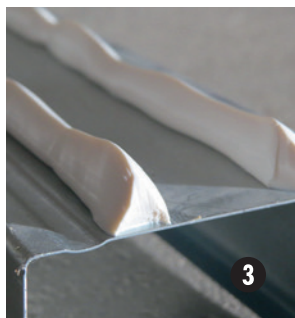
* Not suitable for PE, PP, PTFE, pure plaster and bitumen.

** For an explanation of certifications and standards, see the 'Extensively tested and certified' pages at the front of this folder.

Griffon. The choice of the pro.



STEP-BY-STEP PLAN: INSTALLING A METAL STUD INTERIOR WALL



- 1 Clean surfaces. Define and mark assembly points.
Align with cross line laser if necessary.
- 2 Adjust profile length and lay the profiles at installation site.
Clean the undersides of the profiles.
- 3 Position the nozzle with the point of the triangle facing upwards and at a small angle, to apply the adhesive.
Apply two even and continuous adhesive beads at a distance of 2 cm from the edge.
- 4 Press profiles firmly and evenly onto the surfaces
(watch out for sliding).
- 5 Fix the frame profiles against the wall and the ceiling
in the same manner.
- 6 Place vertical metal stud profiles within the frames
and finish the metal framework.
- 7 The plasterboards can be fixed directly to the
metal framework.

ADVANTAGES OF SCREWLESS FASTENING:

Quiet and clean:

no dust and drilling noise

Fast and efficient:

no waiting times and no insulating tape

Safe and accurate:

no drilling through pipes or wires
and dealing with uneven surfaces



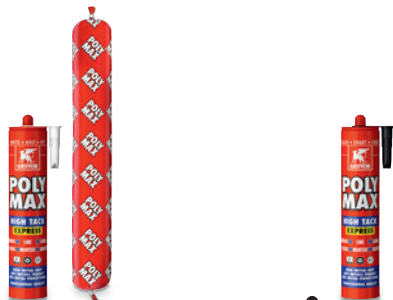
TÜV SÜD CERTIFICATION FOR THE
SCREWLESS FASTENING OF
METAL STUD INTERIOR WALLS





Technical specifications

POLY MAX® HIGH TACK



SPECIFICATIONS

Variant	Express	Express
Colour	White	Black
Chemical basis	SMP-Polymer	SMP-Polymer
Viscosity	Thixotropic	Thixotropic
Tensile strength	Approx. 30 kg/cm ²	Approx. 30 kg/cm ²
Shear strength	Approx. 40 kg/cm ²	Approx. 40 kg/cm ²
Shrinkage	Approx. 0%	Approx. 0%
Hardness (Shore A)	Approx. 70	Approx. 70
Shelf life	At least 18 months. Limited shelf life after opening.	
Storage conditions	Properly sealed packaging should be stored in a dry, cool, frost-proof location at temperatures between +5°C and +25°C.	

CURING TIMES*

Skin formation time	Approx. 15-30 min.	Approx. 15-30 min.
Handling time	Approx. 30 min.	Approx. 30 min.
Curing rate	Approx. 1,6 mm/24 hours	Approx. 1,6 mm/24 hours
Final strength after	Approx. 4 hours	Approx. 4 hours

PROPERTIES

Moisture resistance	Very good	Very good
Water resistance	Good	Good
Temperature resistance	From -40°C to +100°C	From -40°C to +100°C
UV resistance	Good	Good
Chemicals resistance	Good	Good
Paintability**	Good	Good
Elasticity	Approx. 250%	Approx. 250%
Filling capacity	Very good	Very good

* Drying times may vary depending on surface, quantity of product applied, moisture content and ambient temperature, among other factors.

** Test beforehand

Technical specifications

POLY MAX® FIX & SEAL



SPECIFICATIONS

Variant	Express	Express
Colour	White/Grey/Black	Crystal Clear
Chemical basis	SMP-Polymer	SMP-Polymer
Viscosity	Thixotropic	Thixotropic
Tensile strength	Approx. 25 kg/cm ²	Approx. 15 kg/cm ²
Shear strength	Approx. 35 kg/cm ²	Approx. 25 kg/cm ²
Shrinkage	Approx. 0%	Approx. 0%
Hardness (Shore A)	Approx. 60	Approx. 40
Shelf life	At least 18 months. Limited shelf life after opening.	
Storage conditions	Properly sealed packaging should be stored in a dry, cool, frost-proof location at temperatures between +5°C and +25°C.	

CURING TIMES*

Skin formation time	Approx. 10-15 min.	Approx. 45-60 min.
Handling time	Approx. 30 min.	Approx. 2 hours
Curing rate	Approx. 1,5 mm/24 hours	Approx. 2,5 mm/24 hours
Final strength after	Approx. 4 hours	Approx. 4 hours

PROPERTIES

Moisture resistance	Very good	Very good
Water resistance	Good	Good
Temperature resistance	From -40°C to +100°C	From -40°C to +100°C
UV resistance	Good	Moderate
Chemicals resistance	Good	Good
Paintability**	Good	Good
Elasticity	Approx. 200%	Approx. 300%
Filling capacity	Very good	Very good

* Drying times may vary depending on surface, quantity of product applied, moisture content and ambient temperature, among other factors.

** Test beforehand



**GRIFFON IS A BRAND OF
BISON INTERNATIONAL**

Griffon

Dr. A.F. Philipsstraat 9

P.O. Box 160

NL-4460 AD Goes

Tel. +31 (0)113235700

Fax. +31 (0)113232077

info@griffon.eu

www.griffon.eu